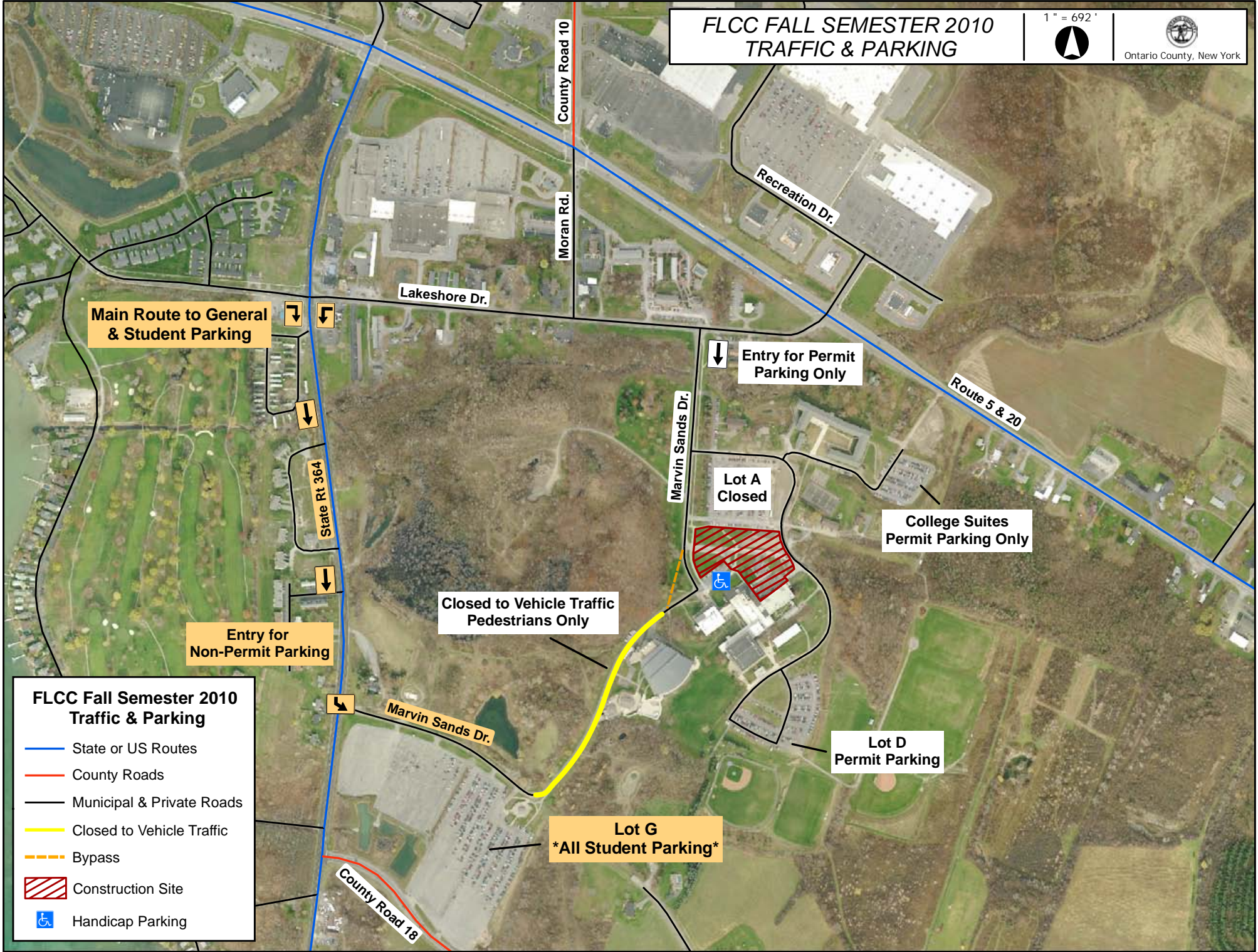


# FLCC FALL SEMESTER 2010 TRAFFIC & PARKING

1" = 692'



Ontario County, New York



Main Route to General & Student Parking

Entry for Permit Parking Only

Entry for Non-Permit Parking

Lot A Closed

College Suites Permit Parking Only

Closed to Vehicle Traffic  
Pedestrians Only

Lot D Permit Parking

Lot G  
\*All Student Parking\*

## FLCC Fall Semester 2010 Traffic & Parking

- State or US Routes
- County Roads
- Municipal & Private Roads
- Closed to Vehicle Traffic
- Bypass
- Construction Site
- Handicap Parking