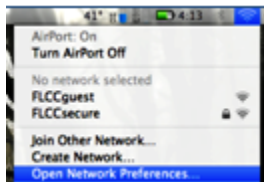


## MAC Instructions to get on FLCCsecure wireless



Click on the AirPort icon to drop down the menu and click Open Network Preference.



If it is connected to a network click Disconnect (it will be where the Connect button is in the picture). If there is neither a Connect or Disconnect button then it is not connected. Click the Advanced button.



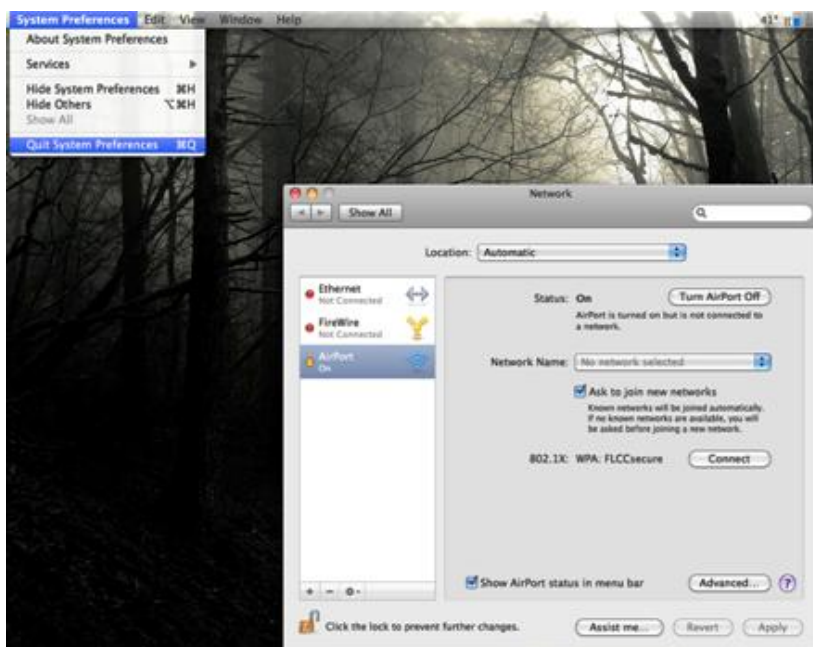
In the first menu remove any FLCC wireless networks by selecting its name and then clicking the minus button.



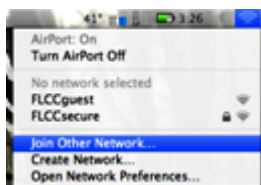
Click on the 802.1X tab and make sure there is no User Profiles for FLCC. If there is just select the profile and click the Minus button. Then click OK to close the window.



Click Apply if any changes were made. Otherwise the Apply button is not clickable.



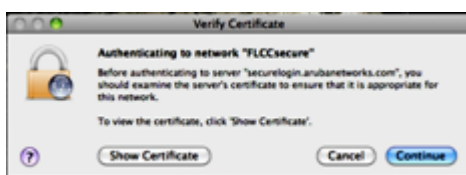
Click the System Preferences menu and click on Quit System Preferences.



Click on the AirPort icon again  
and go to Join Other Network.



Network Name: FLCCsecure (case sensitive)  
Security: WPA2 Enterprise  
User Name format for students: student \*username*  
User Name format for employees: employee \*username*  
Password: xxxxxxxx (whatever this may be)  
802.1X: Automatic  
Make sure Remember this network is checked and then click Join.



Click show certificate once the window pops up. **If this window does not show up then the computer has already accepted the certificate and you can skip the next three steps.**



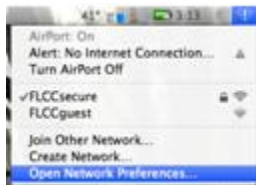
Now click on the triangle next to Trust.



Make sure that under “When using this certificate”, that Always Trust is selected. Click Continue.



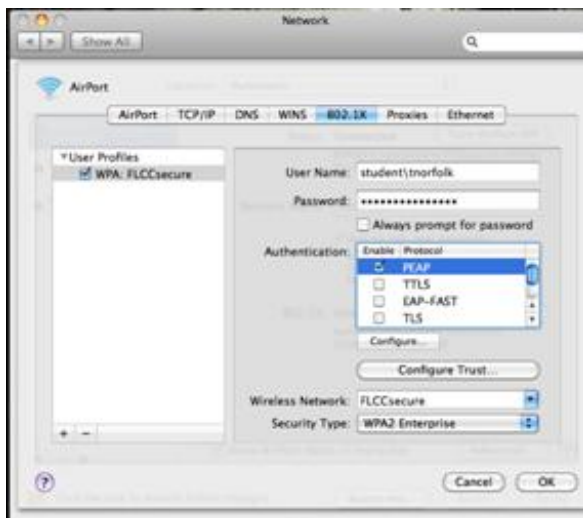
This window requires the student’s or employee’s password for the Mac itself so that changes to the certificate can be made. Enter the password and click OK.



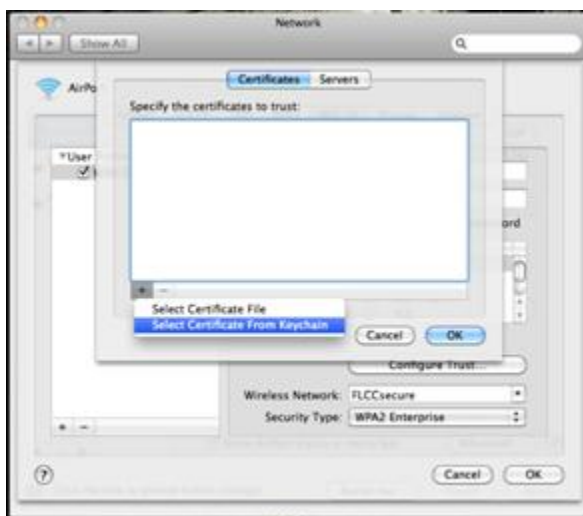
Click on AirPort icon again and go back to Open Network Preferences.



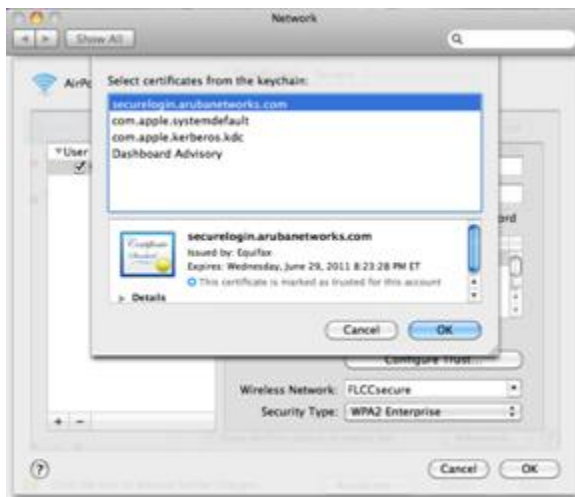
Click on the Advanced button.



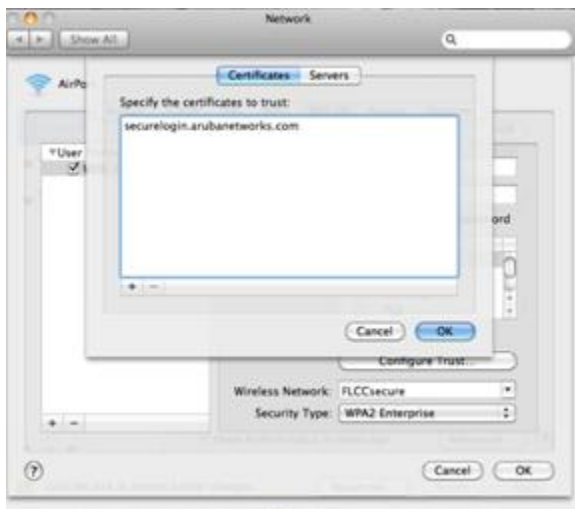
Go to the 802.1X tab and click the profile that says WPA: FLCCsecure. Make sure there is a username and password and that PEAP is the only Protocol enabled. Now click the Configure Trust button.



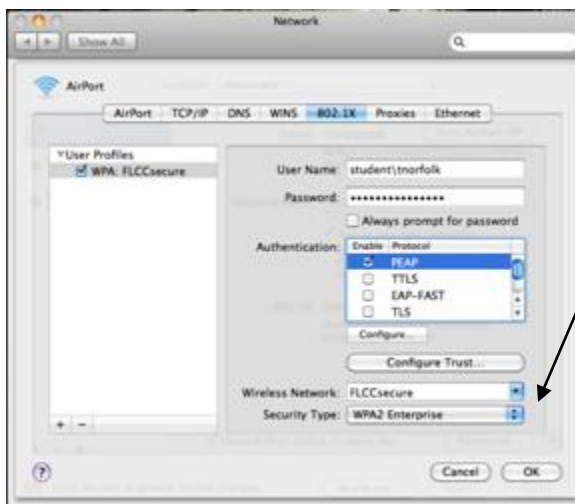
Click the Plus button and choose "Select Certificate From Keychain".



Click on the securelogin.arubanetworks.com and then click OK.



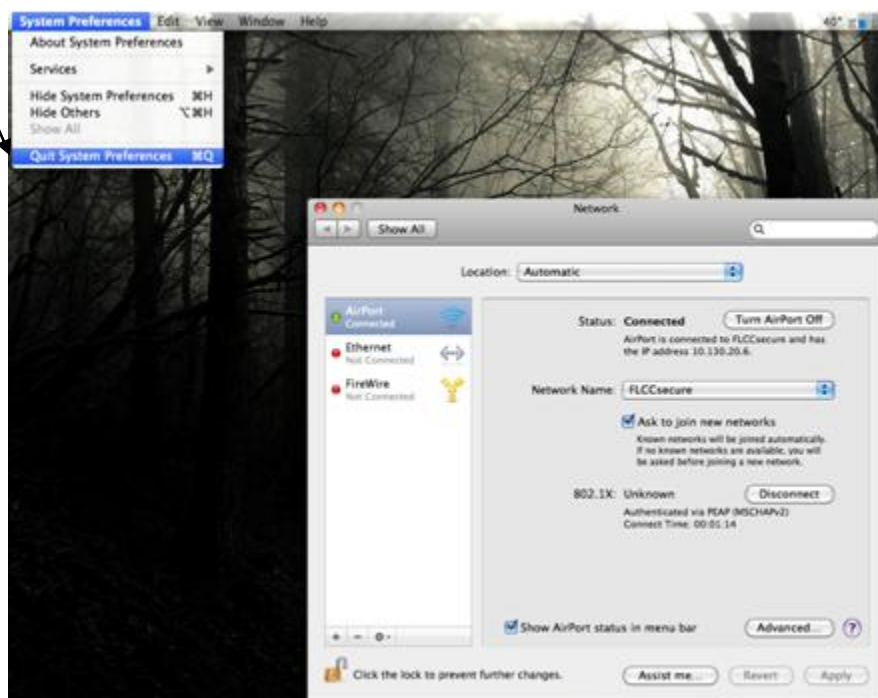
Click OK



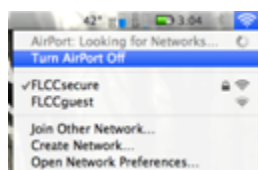
Make sure Wireless Network has FLCCsecure selected and Security Type is on WPA2 Enterprise then click OK.



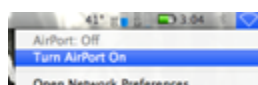
Click the Apply button.



Click on the System Preferences menu and select Quit System Preferences.



It should be all set but just in case, click on the AirPort icon and select Turn AirPort Off.



Click the AirPort icon and select Turn AirPort On. It should now automatically connect every time it is in range of our networks.